

iX4 Pro Series



Best Value in light industrial printer class



Best Label-saving Protocol!

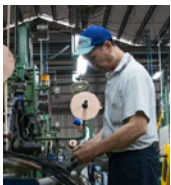
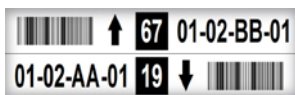


Equipped with high-performance MPU and increase memory capacity to improve work efficiency to meet more application demands

Application



Warehouse



Manufacturing



Transportation & Logistics

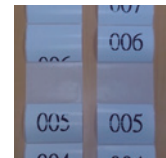


Feature-rich to make daily work simple and easy



New Panel Design

Enlarged push button switches make it convenient for users wearing gloves.



Ultra Friendly Calibration Modes

Single key Intelli- and Smart-mode calibration performing tasks immediately after installation.



Seamless-converting to Argox printers!

Automatic Language Emulation Detection

Automatic adopting commonly used printer control languages for maximized user friendliness. (Auto-Detection & Auto-Conversion)



Multiple Interfaces

Built-in Ethernet, Dual USB hosts, USB device, RS-232, and it can be expanded with Wi-Fi, GPIO card.

*Sales representative for demonstration video.

(iX4-240 Pro/iX4-250 Pro/iX4-350 Pro only)

Print Specifications	iX4-200 Pro	iX4-240 Pro	iX4-250 Pro	iX4-350 Pro
Printing Method	Direct Thermal & Thermal Transfer			
Printing Resolution	203 dpi (8 dots/mm)			300 dpi (12 dots/mm)
Printing Speed	Max. 6 ips		Max. 8 ips	Max. 6 ips
Printing Length	Max. 100"(2540 mm)			Max. 50"(1270 mm)
Printing Width	Max. 4.13"(105 mm)			Max. 4.08"(103.7 mm)
Memory	128MB DRAM, 128MB Flash ROM (USB storage up to 32GB)			
CPU Type	32 bit RISC microprocessor			

Consumables Specifications				
Sensors	Reflective sensor x 1 (Movable) & Transmissive sensor x 1 (centrally positioned)			
Media Type	Roll-feed, die-cut, continuous, fan-fold, black mark, tags, ticket in thermal paper or plain paper			
Media	Max. width:4.48"(114mm). Min. width: 1" (25.4 mm). Thickness: 0.0025"~0.01" (0.0635mm~0.254mm) 8.26"(210mm)OD on a 3"(76mm) ID core. 7"(177.8mm) OD on a 1.5"(38mm) ID core			
Ribbon	Max. width:4.4"(112mm). Min. width: 1" (25.4 mm). Length:max 450m Wax, Max OD 3.2" (81.3mm). Core size ID 1"(25.4mm). Wax, Wax/Resin, Resin (Ribbon wound ink-side out or ink-side in: auto-detect)			

Fonts & Symbolologies	
Fonts	Internal character sets standard, 5 alpha-numeric fonts from 0.049"H ~ 0.23" H (1.25mm ~ 6.0mm), Internal fonts are expandable up to 24x24 4 direction 0 ~ 270 rotation. Soft fonts are downloadable, GB 18030 Standard (Chinese coded character set) support. Ability to print any Windows True Type font easily. Support scalable font
1D Barcodes	PPLA: Code 39 \ UPC-A \ UPC-E \ Code 128 subset A/B/C \ EAN-13 \ EAN-8 \ HBIC \ Codabar \ Plessey \ UPC2 \ UPC5 \ Code 93 \ Postnet \ UCC/EAN-128 \ UCC/EAN-128 K-MART \ UCC/EAN-128 Random weight \ Telepen \ FIM \ Interleaved 2 of 5 (Standard/with modulo 10 checksum/ with human readable check digit/ with modulo 10 checksum & shipping bearer bars) \ GS1 Data bar (RSS) PPLB: Code 39 \ UPC-A \ UPC-E \ Matrix 2 of 5 \ UPC-Interleaved 2 of 5 \ Code 39 with check sum digit \ Code 93 \ EAN-13 \ EAN-8 (Standard, 2/5digit add-on) \ Codabar \ Postnet \ Code128 subset A/B/C \ Code 128 UCC (shipping container code) \ Code 128 auto \ UCC/EAN code 128 (GS1-128) \ Interleave 2 of 5 \ Interleaved 2 of 5 with check sum \ Interleaved 2 of 5 with human readable check digit \ German Postcode \ Matrix 2 of 5 \ UPC Interleaved 2 of 5 \ EAN-13 2/5 digit add-on \ UPCA 2/5 digit add-on \ UPCE 2/5 digit add-on \ GS1 Data bar (RSS) PPLZ: Code39 \ UPC-A \ UPC-E \ Postnet \ Code128 subset A/B/C \ Interleave 2 of 5 \ Interleaved 2 of 5 with check sum \ Interleaved 2 of 5 with human readable check digit \ Code 93 \ Code 39 with check sum digit \ MSI \ EAN-8 \ Codabar \ Code 11 \ EAN-13 \ Plessey \ GS1 Data bar (RSS) \ Industrial 2 of 5 \ Standard 2 of 5 \ Logmars
2D Barcodes	QR Code, PDF417 (including MicroPDF), DataMatrix (ECC200), GS1 DataMatrix, MaxiCode
Graphics	PPLA: PCX, BMP, IMG, HEX,GDI / PPLB: PCX, BMP, Binary raster, GDI / PPLZ: GRF, Hex, GDI
Emulation	PPLA, PPLB, PPLZ, Auto

Interface Characteristics and Integration		
Operation Interface	LED indicator x 3, Button x 3	LED indicator x 3, Button x 3, LCD Display x 1
Communication Interface	USB device, RS-232	USB device, RS-232, Ethernet, USB host x 2
Real Time Clock (RTC)	N/A	Standard
Drivers	Windows Driver for Vista/Win7/Win8/Win10, LINUX Driver, macOS Driver, Raspberry Pi Driver	
Software	BarTender, ArgoxBar Pro, Printer Tool, Font Utility, iLabelPrint+	
Database Link	Argobar Pro support ODBC Database Connection: Excel, CSV, MS Access, MS SQL, Oracle MySQL, dBASE (*.dbf)	

Operating & Environment Characteristics	
Power Source	Internal Universal Switching Power supply. Input voltage: 100~240V, 50~60Hz
Operation Environment	Operation Temperature: 40°F~104°F (4°C~40°C), 0% ~ 90% non-condensing, Storage Temperature: -4°F~122°F (-20°C~50°C)
Agency Listing	CE, CB, cULus, FCC, ICES, RoHS, BSMI

Physical Characteristics	
Printer Dimensions	W 257 mm x H 263 mm x D 432 mm
Printer Weight	29lbs (13 kg)

*Argox reserves the right to enhance and modify the specification without prior notice. Please check Argox sales representative for most updated specifications.



ARGOX Certified Repair Centers

Consult your local Argox business partners for location and contacts.

Optional Items



(*) Not available for iX4-200 Pro

Argox Information Co., Ltd.

8F., No. 28, Baogao Rd., Xindian Dist., New Taipei City 231029, Taiwan (R.O.C.)
Tel: +886-2-8912-1121 Fax: +886-2-8912-1124 <https://www.argoxt.com> <https://www.youtube.com/user/argoxtmkt> email:service@argoxt.com
Copyright © 2024. Argox Information Co., Ltd. All Rights Reserved.

