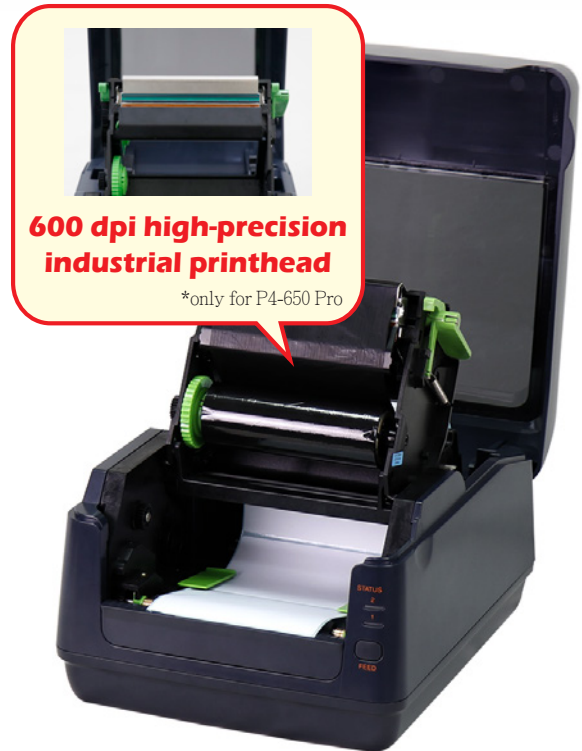


# 4-inch thermal transfer desktop printer

## P4 Pro series



**600 dpi high-precision industrial printhead**

*\*only for P4-650 Pro*

### High superior label printing on desktop printer



In order to fulfill customer's need for a superior label printing, Argox developed P4 Pro series desktop printer. The high-resolution printing quality meets the market demand for top-quality labels.

#### Application



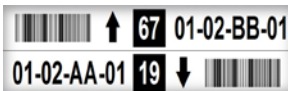
Healthcare



Manufacturing



Inventory



Electronic components

*\*only for P4-650 Pro*



#### Feature-rich to make daily work simple and easy



#### printing speed up to 6 inches per second

P4 Pro series in the printing speed is a substantial increase in the maximum speed, which can reach 6 ips.



#### Ultra Friendly Calibration Modes

Single key Intelli- and Smart-mode calibration performing tasks immediately after installation.



Seamless-converting to Argox printers!

#### Automatic Language Emulation Detection

Automatic adopting commonly used printer control languages for maximized user friendliness. (Auto-Detection & Auto-Conversion)

*\*Sales representative for demonstration video.*



#### Multiple Interfaces

The P4 Pro series has built-in Ethernet, USB host, USB device, RS-232 and it can be expanded with Wi-Fi, Bluetooth v2.1.

Print Specifications	P4-250 Pro	P4-350 Pro	P4-650 Pro
Printing Method	Direct Thermal & Thermal Transfer		
Printing Resolution	203 dpi (8 dots/mm)	300 dpi (12 dots/mm)	600 dpi (24 dots/mm)
Printing Speed	Max. 6 ips	Max. 4 ips	Max. 4ips (101.6mm/s); Max. 3ips (76.2mm/s) for peel off mode
Printing Length	Max. 100"(2540 mm)	Max. 50"(1270 mm)	Max. 30" (762mm)
Printing Width	Max. 4.25"(108 mm)	Max. 4.16"(105.7 mm)	Max. 4.16" (105.7mm)
Memory	128MB SDRAM, 128MB Flash ROM		
CPU Type	32 bit RISC microprocessor		

Consumables Specifications	
Sensors	Reflective sensor x 1 (movable) & Transmissive sensor x 1 (fixed, 6.27mm offset)
Media Type	Roll-feed, die-cut, continuous, fan-fold, black mark, tags, ticket in thermal paper or plain paper
Media	Max. width: 4.65" (118mm). Min. width: 0.88" (22.4mm). Thickness: 0.0024"~0.0075" (0.06mm~0.19mm) 5"(127mm) OD on a 1"/1.5" (25.4/38 mm) ID core; Dealer Option external media stand 8" OD on 1"/3" ID Core
Ribbon	Ribbon width: 1.6"~4.33"(40 mm~110mm), Ribbon length: max 300m. Core size ID 1"(25.4 mm) or 0.5"(12.7mm) Wax, Wax/Resin, Resin (Ribbon wound ink-side out or ink-side in: auto-detect)

Fonts & Symbolologies	
Fonts	Internal character sets standard, 5 alpha-numeric fonts from 0.049"H ~ 0.23" H (1.25mm ~ 6.0mm) Internal fonts are expandable up to 24x24 4 direction 0 ~ 270 rotation. Soft fonts are downloadable Ability to print any Windows True Type font easily. Support scalable font. GB 18030 Standard (Chinese coded character set) support
1D Barcodes	PPLA: Code 39、UPC-A、UPC-E、Code 128 subset A/B/C、EAN-13、EAN-8、HBIC、Codabar、Plessey、UPC2、UPC5、Code 93、Postnet、UCC/EAN-128、UCC/EAN-128 K-MART、UCC/EAN-128 Random weight、Telepen、FIM、Interleaved 2 of 5 (Standard/with modulo 10 checksum/ with human readable check digit/ with modulo 10 checksum & shipping bearer bars)、GS1 Data bar (RSS) PPLB: Code 39、UPC-A、UPC-E、Matrix 2 of 5、UPC-Interleaved 2 of 5、Code 39 with check sum digit、Code 93、EAN-13、EAN-8 (Standard, 2/5digit add-on)、Codabar、Postnet、Code128 subset A/B/C、Code 128 UCC (shipping container code)、Code 128 auto、UCC/EAN code 128 (GS1-128)、Interleave 2 of 5、Interleaved 2 of 5 with check sum、Interleaved 2 of 5 with human readable check digit、German Postcode、Matrix 2 of 5、UPC Interleaved 2 of 5、EAN-13 2/5 digit add-on、UPCA 2/5 digit add-on、UPCE 2/5 digit add-on、GS1 Data bar (RSS) PPLZ: Code39、UPC-A、UPC-E、Postnet、Code128 subset A/B/C、Interleave 2 of 5、Interleaved 2 of 5 with check sum、Interleaved 2 of 5 with human readable check digit、Code 93、Code 39 with check sum digit、MSI、EAN-8、Codabar、Code 11、EAN-13、Plessey、GS1 Data bar (RSS)、Industrial 2 of 5、Standard 2 of 5、Logmars
2D Barcodes	MaxiCode, PDF417, Data Matrix (ECC 200 only), QR code, Composite Codes, Aztec
Graphics	PPLA: PCX, BMP, IMG, HEX,GDI / PPLB: PCX, BMP, Binary raster, GDI / PPLZ: GRF, Hex, GDI
Emulation	PPLA, PPLB, PPLZ, Auto

Interface Characteristics and Integration	
Operation Interface	LED Indicator x 2, Button(Feed) x 1
Communication Interface	USB device, RS-232, Ethernet, USB host
Drivers	Windows Vista/Win7/Win8/Win10, LINUX Driver, macOS Driver, Raspberry Pi Driver
Software	BarTender, Printer Tool, Font Utility
Application	iLabelPrint+
Database Link	Argobar Pro support ODBC Database Connection: Excel, CSV, MS Access, MS SQL, Oracle MySQL, dBASE (*.dbf)

Operating & Environment Characteristics	
Power Source	Universal Switching Power supply. AC input voltage: 100~240V, 50~60Hz. DC Output: 24V, 3.75A
Operation Environment	Operation Temperature: 41°F~104°F (5°C~40°C), 0% ~ 90% non-condensing, Storage Temperature: -4°F~140°F (-20°C~60°C)
Agency Listing	CE, FCC, IC, CB, UL, RoHs, BSMI

Physical Characteristics	
Printer Dimensions	W 220.6mm x H 187.5mm x D 278.5mm
Printer Weight	5.28 lbs (2.4 kg)

\*Argox reserves the right to enhance and modify the specification without prior notice.  
Please check Argox sales representative for most updated specifications.

### Optional Items



Full/partial cutter, guillotine-type



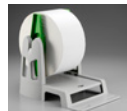
Peeler



WLAN



Bluetooth v2.1 Support BT 2.1 on Android connectivity



External media stand



### Argox Information Co., Ltd.

8F., No. 28, Baogao Rd., Xindian Dist., New Taipei City 231029, Taiwan (R.O.C.)  
Tel: +886-2-8912-1121 Fax: +886-2-8912-1124 <https://www.argoxt.com> <https://www.youtube.com/user/argoxtmkt>  
Copyright © 2024. Argox Information Co., Ltd. All Rights Reserved.